

September 2024



[About Us](#)

[Research](#)

[Career Development](#)

[PPIE](#)

[News and Events](#)

NIHR | School for Primary Care Research

PRIMARY CARE CLINICIANS  
PHD PROGRAMME

OPEN FOR APPLICATIONS

Closing Date:

**12 December 2024**

11.59pm

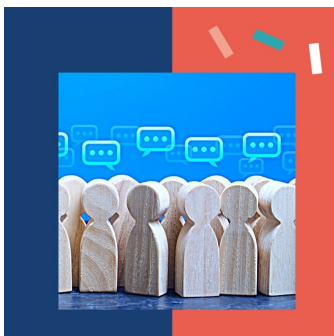
The banner has a dark blue background. In the top left corner is the NIHR logo. In the top right corner is a decorative graphic of teal and white squares and vertical bars. The main text is in white, with the closing date highlighted in a red box. In the bottom left corner is another decorative graphic of teal and white squares and vertical bars.

The Primary Care Clinicians PhD programme is now open for applications. Applications for the 2025 programme are welcomed from clinicians of all disciplines working in UK primary care, for example: practice nurses; health visitors; dentists, primary care pharmacists; optometrists working in primary care and general practitioners (NB this list is not exhaustive)

**Closing date: 11.59pm Thursday 12th December 2024**

[Find out more](#)

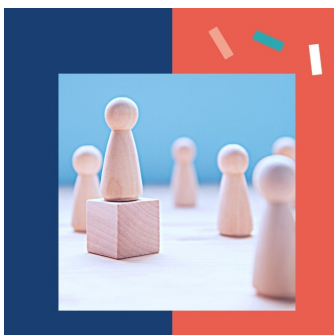
**SPCR News**



## Series on public involvement and engagement published in European Journal of General Practice

Earlier this year, the European Journal of General Practice published a four-part series on public involvement and engagement in research. See the full details for the series in this latest news article.

[Go to the full article](#)

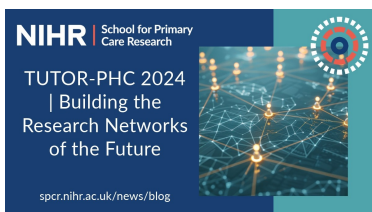


## Researchers of Black Heritage and Primary Care Research Leadership in England – Invitation to participate

The NIHR School for Primary Care Research (SPCR) Board has commissioned work to explore the representation of individuals of Black heritage in primary care research. We are interested in hearing the views of Heads of Department and researchers of Black heritage engaged in primary care research, across career levels.

[Go to the full article](#)

# SPCR Blogs



## TUTOR-PHC 2024 | Building the Research Networks of the Future

Francesca Dakin, one of our SPCR Trainees, reflects on her TUTOR-PHC programme visit based at Western University in Canada.

[Read more in our latest blog post](#)

# NIHR Updates

# Funding Call for NIHR Three Schools' Mental Health Research Programme

The NIHR Three Schools' Mental Health Research Programme has a new funding opportunity.

- Research Development Grant for Mental Health in Different Religious Groups - deadline **15:30 on Monday 21 October 2024**
- Career Development Award - deadline **15:30 on Friday 15 November 2024**

[Go to funding details](#)

---

# Funding Call for NIHR Three Schools' Dementia Research Programme

The NIHR Three Schools' Dementia Research Programme has new funding opportunities.

- Career Development Awards – applications are due **by 16 October 2024**

[Go to funding details](#)

---

# Funding Call for NIHR Three Schools' Prevention Research Programme

The NIHR Three Schools' Prevention Research Programme is now open for applications for;

- [Research Projects](#) - Deadline is **5pm, Friday 29 November 2024**
- [Practice Evaluation Scheme](#) - The deadline for Expressions of Interests, which are mandatory, is **5pm on 31 October 2024**.

Detailed information on funding, eligibility criteria, application processes, selection criteria, timelines, and the commissioning process is available through the call links above.

**Publications**



**More evidence needed before upper respiratory tract point-of-care microbiological testing for respiratory infections is used in primary care.** Alastair D Hay et al writes for *Science Direct*  
SPCR funding project reference: [589](#)

---



**What over the counter (OTC) products have been evaluated for anxiety in adults aged 18–60? A scoping review.** Cini Bhanu et al writes for *Journal of Mental Health*  
SPCR funding project reference: [635](#)

## Events



### QNI Masterclass | Conducting Service Evaluations

Tuesday 5 November 2024, 1pm - 2pm

This free 1-hour workshop will cover conducting service evaluations, featuring Helen Marshall, Kate Lippiett and Rachael Moses.

This masterclass is part of a series of events by the QNI's [Community Nursing Research Forum](#) and is open to all community nurses and midwives interested in research.

[Register here](#)

# Studies

## The Hidden Workload Study has now been launched

[Primary care Academic CollaboraTive](#) (PACT) wants to better understand the daily workload of clinicians who work in general practice, especially the large amount of work that clinicians do other than seeing patients in planned consultations. This is often referred to as our “hidden” workload. If you are a clinician working in general practice in England you are likely eligible to take part! In this study PACT want participants to record all the work you do on a single workday using a simple form. You can also choose to take part in interviews to talk more about your workload and the work involved in looking after your local community. All participants will be credited as a co-author on any resulting publications and presentations.

To join The Hidden Workload Study or find out more, go to [www.gppact.org/the-hidden-workload-study](http://www.gppact.org/the-hidden-workload-study)

## Communications



### We're on Bluesky

We're joining thousands of others from the health research sector who are moving to Bluesky. We will be using this account, alongside X / Twitter, to share our news and updates.

**Follow us** - [@NIHRSPCR.bsky.social](https://bsky.app/profile/NIHRSPCR.bsky.social)



### We're on LinkedIn

Did you know that the [NIHR SPCR](#) is on LinkedIn?

Please give us a follow if you're on there!



## Three Schools' Mental Health Programme Newsletters

Find out what's happening with the [Three Schools' Mental Health Programme](#). Sign up to the quarterly newsletter to receive automatic emails to your inbox.

[Subscribe to the Three Schools' newsletter here](#)

---

## Subscribe to the SPCR newsletter

Details of publications and dissemination work, related to SPCR funded research, can be shared with the School by emailing Heather Gibbs: [h.g.gibbs@keele.ac.uk](mailto:h.g.gibbs@keele.ac.uk)

You are receiving this email because you signed up for our newsletter.

Visit us on social media:



If you would like to unsubscribe, please click [here](#).

